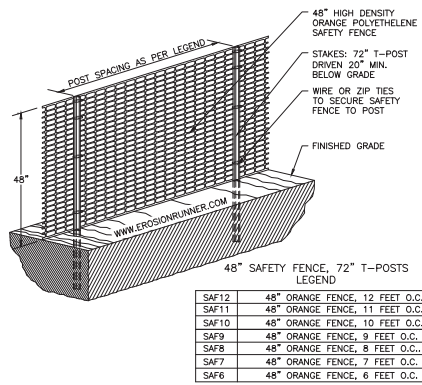
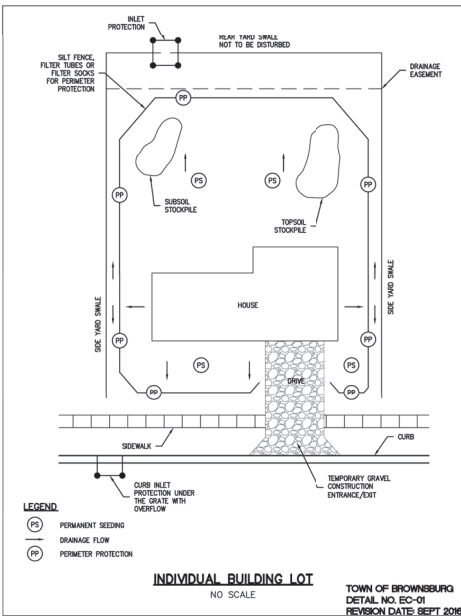
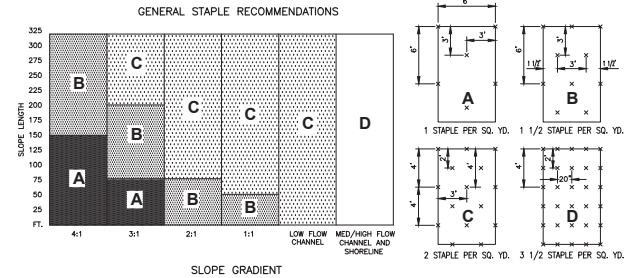


Layout: Tab Name: C307, Images: Xrefs: 81172BLK.dwg
 Lant_Saved By: Danilova, 8/7/2020 12:38:02 PM
 C:\Users\Glenius\Printer Connection Group\USB 172 - Brownsburg Project - Asha - Facility\3-D\Drawings\Civil\Code\81172E0002.dwg Picked By: Conner, Date: 8/3/2020 4:28:55 PM

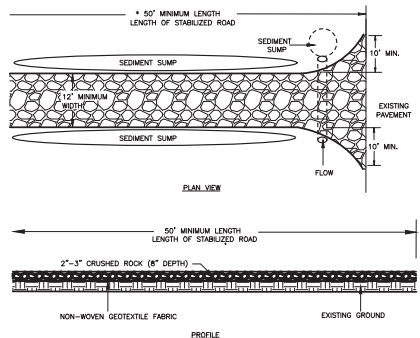
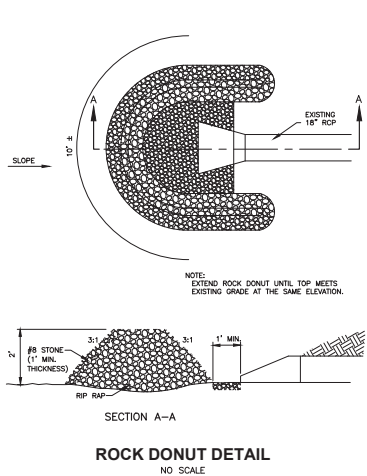


- ALL SENSITIVE AREAS SHALL BE PROTECTED AS PER PLAN.
- ALL TREES IN THE CONSTRUCTION AREA NOT SPECIFICALLY DESIGNATED FOR REMOVAL SHALL BE PRESERVED AND PROTECTED WITH HIGH VISIBILITY FENCE AS PER PLAN.
- WHEN PRACTICABLE, INSTALL HIGH VISIBILITY FENCE 3 FEET OUTSIDE OF THE DRIP LINE OF THE TREE.
- SAFETY FENCE SHOULD BE FASTENED SECURELY TO T-POSTS.
- THE FENCING MUST REMAIN IN PLACE DURING ALL PHASES OF CONSTRUCTION; ANY CHANGE OF THE PROTECTIVE FENCING MUST BE APPROVED.

SENSITIVE AREA/TREE PROTECTION
NO SCALE



EROSION CONTROL MAT INSTALLATION GUIDE DETAIL
NO SCALE



- DESCRIPTION**
 ALL ACCESS POINTS FROM THE CONSTRUCTION SITE ARE TO INCLUDE A STABILIZED CONSTRUCTION ENTRANCE/EXIT COMPOSED OF COURSE STONE TO THE DIMENSIONS AND SPECIFICATIONS SHOWN HERE. CONSTRUCTION TRAFFIC MUST ENTER AND EXIT THE SITE AT THE STABILIZED CONSTRUCTION EXIT. THE PURPOSE IS TO TRAP DUST AND MUD THAT WOULD OTHERWISE BE CARRIED BEYOND THE PERMITTED PROJECT AREA BY CONSTRUCTION TRAFFIC. THE ROUGH TEXTURE OF THE STONE HELPS TO REMOVE CLUMPS OF SOIL ADHERING TO THE CONSTRUCTION VEHICLE TIRES THROUGH THE ACTION OF VIBRATION AND JARRING OVER THE ROUGH SURFACE.
- IN THE EVENT THE STABILIZED CONSTRUCTION ENTRANCE IS NOT EFFECTIVE BY ITSELF AND/OR REQUIRES A SIGNIFICANT AMOUNT OF MAINTENANCE, ADDITIONAL PRACTICES, SUCH AS WHEEL WASHING OR STREET SWEEPING, MAY BE REQUIRED.**
- INSTALLATION**
- STABILIZED CONSTRUCTION ACCESS ROAD SHOULD BE ESTABLISHED AT THE ONSET OF THE CONSTRUCTION ACTIVITIES AND MAINTAINED IN PLACE FOR THE DURATION OF THE CONSTRUCTION PROJECT.
 - INSTALLATION OF THIS PRACTICE SHOULD BE THE RESPONSIBILITY OF THE SITE CLEARING OR EXCAVATING CONTRACTOR.
 - ACCESS LOCATION SHOULD BE CLEARED OF WOODY VEGETATION.
 - NON-WOVEN GEOTEXTILE FABRIC SHALL BE PLACED OVER THE EXISTING GROUND PRIOR TO PLACING STONE.
 - ACCESS SIZE SHOULD BE A MINIMUM OF 50'.
 - ACCESS WIDTH SHOULD BE 12' MINIMUM, FLARED AT THE EXISTING ROAD TO PROVIDE A TURNING RADIUS.
 - CRUSHED AGGREGATE (DOT CA No. 2 (1-2.5" @), SHALL BE PLACED AT LEAST 8" DEEP OVER THE LENGTH AND WIDTH OF THE INGRESS/EGRESS CORRIDOR.
- MAINTENANCE**
- PERIODIC INSPECTION AND NEEDED MAINTENANCE SHALL BE PROVIDED AFTER EACH RAIN EVENT.
 - STABILIZED ENTRANCES SHALL BE REPAIRED AND ROCK ADDED AS NECESSARY.
 - SEDIMENT DEPOSITED ON PUBLIC RIGHTS-OF-WAY SHALL BE REMOVED IMMEDIATELY AND RETURNED TO THE CONSTRUCTION SITE.
 - IF SOILS ARE SUCH THAT WASHING OF TIRES IS REQUIRED, IT SHALL BE DONE IN A WASH RACK AREA, STABILIZED WITH STONE, IMMEDIATELY PRIOR TO THE CONSTRUCTION ACCESS STABILIZED CORRIDOR.
 - AT THE PROJECT COMPLETION, ROCK ACCESS ROAD SHOULD BE REMOVED AND DISPOSED OF UNLESS UTILIZED AS SUBGRADE FOR FINAL ROAD.
 - EFFECTIVENESS LIMITED, SEDIMENT MAY BE TRACKED ONTO ROADS REQUIRING ADDITIONAL ACTION.

EROSION CONTROL SCHEDULE		
EROSION CONTROL MEASURE	MAINTENANCE	INSTALLATION SEQUENCE
STONE ENTRANCE	INSPECT WEEKLY AFTER STORM EVENTS, AND AFTER HEAVY USE; RESHAPE AND AS NEEDED FOR DRAINAGE AND RUNOFF CONTROL; TOP SPEED WITH CLEAN STONE AS NEEDED; RAKE ALL MUD AND SEDIMENT TRACKED OR WASHED ONTO PUBLIC ROADS IMMEDIATELY	PRIOR TO CLEARING AND GRADING
SILT FENCE	INSPECT AFTER STORM EVENTS; REPAIR ANY AREAS OF DECOMPOSITION OR FAILURE TO TRAP SEDIMENT; REMOVE SEDIMENT AT DEPTH OF ONE FOOT FROM HEAD AT LINED POINT OR IF FABRIC BULGES; MUD UNLEARNING DURING CLEANUP	PRIOR TO CLEARING AND GRADING
EXISTING INLET PROTECTION	WEEKLY AFTER STORM EVENTS, AND AS NEEDED	PRIOR TO CLEARING AND GRADING
TREE PROTECTION	WEEKLY AFTER STORM EVENTS, AND AS NEEDED	PRIOR TO CLEARING AND GRADING
TEMPORARY DIMENSIONS	INSPECT WEEKLY AND AFTER EACH STORM EVENT; REMOVE SEDIMENT FROM CHANNEL AND REPAIR EDGE AS NEEDED; REPAIR OUTLET WHEN WORK AREA IS STABILIZED; REMOVE SEDIMENT AT DEPTH OF ONE FOOT FROM HEAD AT LINED POINT OR IF FABRIC BULGES; MUD UNLEARNING DURING CLEANUP	ALONG WITH ROUGH GRADING
TEMPORARY SEDIMENT TRAP	INSPECT AFTER STORM EVENTS; REMOVE SEDIMENT AT ONE HALF DESIGN DEPTH; REPLACE SPILLWAY GRAVEL; FACING IF CLOGGED; REPAIR OUTLET AND HEAD AS NEEDED; REPAIR CLOGGED BURN	DURING CLEARING AND PRIOR TO GRADING
TEMPORARY SEEDING	INSPECT PERIODICALLY TO VERIFY ADEQUATE ESTABLISHMENT OF VEGETATIVE SEEDING; RESEED AND MULCH AS NEEDED; INSPECT AFTER STORM EVENTS AND REPAIR EROSION DAMAGES TOP OF FALL SEEDED WEED OR RYE SEEDINGS WITH 50 LB/AC OF NITROGEN IN FEBRUARY OR MARCH IF NITROGEN DEFICIENCY IS APPARENT; WATER AS NEEDED	AFTER ROUGH GRADING
PERMANENT SEEDING	INSPECT PERIODICALLY AND AFTER STORM EVENTS UNTIL VEGETATIVE STAIN IS ESTABLISHED AND VEGETATION WITH SPONGING SEASON FOR SOIL TEST RECOMMENDATIONS; REPAIR DAMAGED BALE, OR SPARSE AREAS BY REPAIR, REVERSEING THE SEED BED, FERTILIZING, AND/OR SEEDING AND MULCHING	AFTER FINISH GRADING OF EACH AREA
EROSION CONTROL BLANKET	INSPECT FOR AREAS OF EROSION BELOW THE BLANKET AFTER EACH STORM EVENT; REPAIR AREAS OF EROSION BY REMOVING AFFECTED PORTION OF BLANKET, ADD SOIL, RESEED, RELAY AND STAPLE BLANKET; INSPECT PERIODICALLY AFTER VEGETATION IS ESTABLISHED	AFTER FINISH GRADING
STRAW BALES	INSPECT THE BALES AFTER EACH STORM EVENT; REMOVE SEDIMENT DEPOSITED TO PROTECT CORNER FOR THE NEXT STORM EVENT; CAREFUL NOT TO DAMAGE OR UNDO THE BALES; REPAIR DAMAGED OR DECOMPOSED BALES IMMEDIATELY	AFTER FINISH GRADING
INLET PROTECTION	REPAIR FABRIC IMMEDIATELY AFTER STORM EVENTS AND MAKE NEEDED REPAIRS IMMEDIATELY; REMOVE SEDIMENT FROM THE POOL AREA WHILE AVOIDING DAMAGING OR UNDOING THE FABRIC	AFTER EACH INLET IS PLACED
SEED, SOIL & LANDSCAPE AROUND UNITS FINISHED	KEEP SOIL MOIST UNTIL FULLY ROOTED; WATER AS NEEDED	AFTER FINISH GRADING AROUND FINISHED UNITS
REMOVAL OF STRAW BALES	N/A	AFTER ALL AREAS DRAWING TO THESE AREAS ARE STABILIZED
REMOVAL OF INLET PROTECTION	N/A	AFTER ALL AREAS DRAWING TO THESE AREAS ARE STABILIZED
REMOVAL OF SILT FENCE	N/A	AFTER ALL AREAS DRAWING TO THESE AREAS ARE STABILIZED

PROJECT NO.: 81172
DATE: 08/03/20
DES. DR.:
C.D.:

333 North Alabama Street
 Suite 200
 Indianapolis, IN 46204
 317.299.7600
 317.291.5805

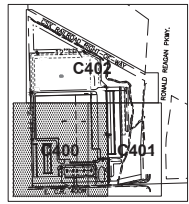
WOLBERT
 CONSULTANTS

PROJECT AISLE
 EAST C.R. 400N AND RONALD REAGAN PKWY.
 BROWNSBURG, INDIANA

EROSION CONTROL DETAILS

SHEET NO. **C307**

Layout, Tab Name: C400, Images: Xrefs: 81172-x.dwg, 81172-p.dwg, 81172-TBK.dwg
 Lant: Saved By: hick, 8/2/2020 4:14:19 PM
 C:\E:\Client\Plan Construction Group\08172_Brownburg Project Aisle Facility\A-0_Disciplines\Civil\Coord\8117201.dwg Plotted: By: cdegenhart, Brooks Plotted: August 3, 2020, 4:27:10 PM

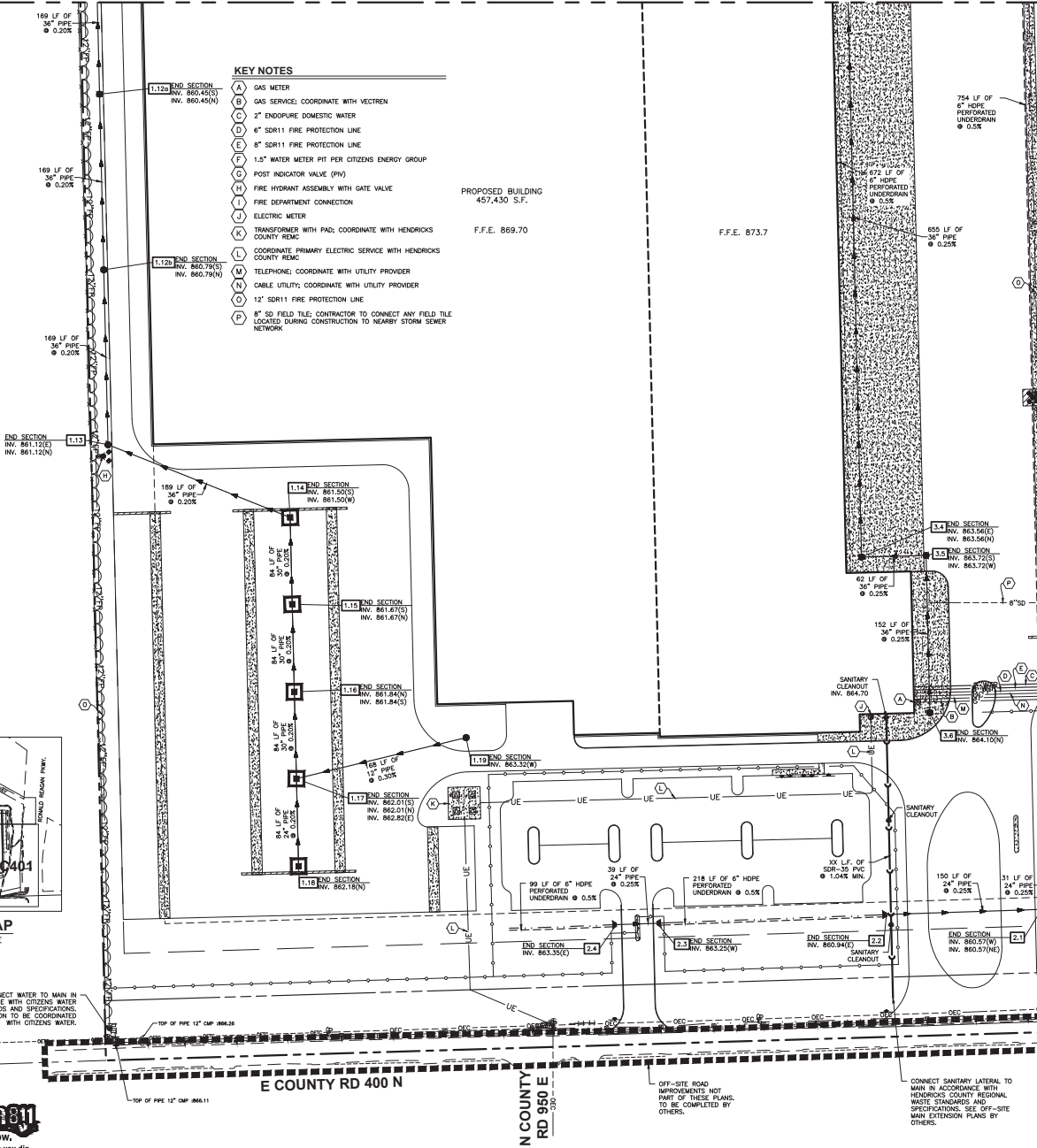


KEYMAP
NO SCALE

CONNECT WATER TO MAIN IN ACCORDANCE WITH CITIZENS WATER GROUP STANDARDS AND SPECIFICATIONS. MAIN EXTENSION TO BE COORDINATED WITH CITIZENS WATER.



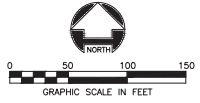
MATCHLINE - FOR CONTINUATION SEE SHEET C402



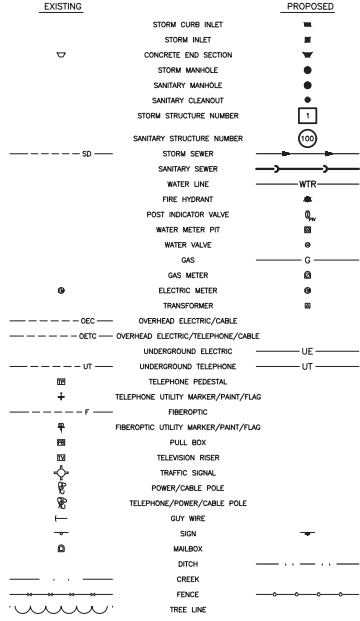
- KEY NOTES**
- (A) GAS METER
 - (B) GAS SERVICE; COORDINATE WITH VECTREN
 - (C) 2" ENDUSE DOMESTIC WATER
 - (D) 6" SDR11 FIRE PROTECTION LINE
 - (E) 8" SDR11 FIRE PROTECTION LINE
 - (F) 1.5" WATER METER PIT PER CITIZENS ENERGY GROUP
 - (G) POST INDICATOR VALVE (PIV)
 - (H) FIRE HYDRANT ASSEMBLY WITH GATE VALVE
 - (I) FIRE DEPARTMENT CONNECTION
 - (J) ELECTRIC METER
 - (K) TRANSFORMER WITH PAD; COORDINATE WITH HENDRICKS COUNTY REMC
 - (L) COORDINATE PRIMARY ELECTRIC SERVICE WITH HENDRICKS COUNTY REMC
 - (M) TELEPHONE; COORDINATE WITH UTILITY PROVIDER
 - (N) CABLE UTILITY; COORDINATE WITH UTILITY PROVIDER
 - (O) 12" SDR11 FIRE PROTECTION LINE
 - (P) 8" SD FIELD TILE; CONTRACTOR TO CONNECT ANY FIELD TILE LOCATED DURING CONSTRUCTION TO NEARBY STORM SEWER NETWORK.

PROPOSED BUILDING
457,430 S.F.
F.F.E. 869.70

F.F.E. 873.7



LEGEND

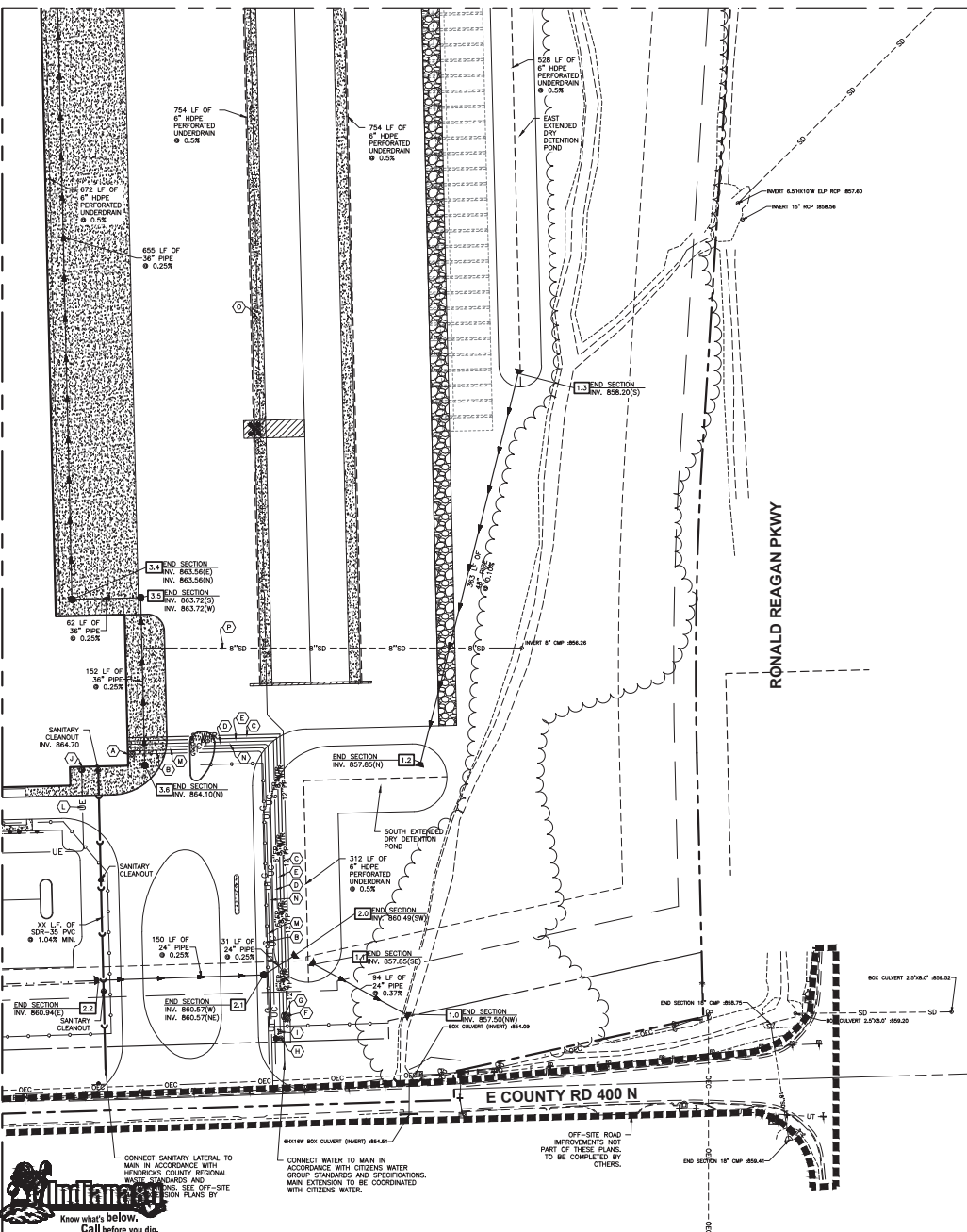


UTILITY NOTES

- ROOF DRAINS, FOUNDATION DRAINS, AND OTHER CLEAN WATER CONNECTIONS TO THE SANITARY SEWER SYSTEM ARE PROHIBITED.
- SANITARY MANHOLES SHALL BE PRECAST CONCRETE OR MONOLITHIC, CONSTRUCTED OF CLASS "A" 4,000 PSI CONCRETE, AND CONFORMING TO ASTM C-418.
- JOINTS BETWEEN PRECAST SANITARY MANHOLE SECTIONS SHALL CONFORM TO ASTM C-443.
- SANITARY SEWER PIPE AND FITTINGS MAY BE EITHER PVC THAT CONFORMS TO ASTM D-3034, SDR 35 WITH A MINIMUM CELL CLASSIFICATION OF 12454-B, OR REINFORCED CONCRETE PIPE CLASS III, IV, OR V IN ACCORDANCE WITH ASTM C-761, OR DUCTILE IRON PIPE CONFORMING TO AASHTO SPECIFICATIONS A21.51 AND AWWA C-151, OR HIGH DENSITY POLYETHYLENE PIPE CONFORMING TO ASTM-3550 CELL CLASS P.E. 3544-330.
- CONSTRUCTION SHALL NOT COMMENCE UNTIL AN IMPROVEMENT LOCATION PERMIT HAS BEEN OBTAINED.
- WATER MAINS CROSSING ANY AND ALL SEWERS SHALL HAVE A MINIMUM VERTICAL SEPARATION OF 18" BETWEEN THE OUTSIDE OF THE WATER MAIN PIPE AND THE SEWER PIPE. ONE FULL LENGTH OF WATER MAIN PIPE SHALL BE CENTERED AT THE POINT OF THE CROSSING SUCH THAT BOTH JOINTS WILL BE EQUIDISTANT AND AS FAR AWAY FROM THE SEWER AS POSSIBLE. IF WATER LINES CROSS BELOW SANITARY SEWER LINES, SEWER LINE MUST BE CONSTRUCTED OF EITHER DUCTILE IRON PIPE OR OF 200 psi PVC (SDR-21 OR EQUIVALENT) FOR THAT PARTICULAR SPAN.
- EXISTING UNDERGROUND UTILITIES ARE SHOWN IN THEIR APPROXIMATE LOCATIONS ACCORDING TO THE BEST AVAILABLE INFORMATION. THE CONTRACTOR SHALL BE RESPONSIBLE FOR DETERMINING THE EXACT LOCATION OF THE EXISTING UTILITIES AND REPAIRING ANY DAMAGE DONE TO THE UTILITIES DURING PROBING OR CONSTRUCTION. TO OBTAIN ACCURATE FIELD LOCATIONS OF EXISTING UNDERGROUND UTILITIES, THE CONTRACTOR SHALL NOTIFY THE FOLLOWING FORTY-EIGHT (48) HOURS IN ADVANCE: INDIANA UNDERGROUND CABLE LOCATION 1-800-382-8244.
- ALL STORM DRAINAGE CONSTRUCTION SHALL BE PERFORMED IN ACCORDANCE WITH LOCAL STORM SEWER SPECIFICATIONS AND REQUIREMENTS.
- FIELD TILE ENCOUNTERED SHALL BE REPLACED AND/OR CONNECTED TO THE STORM SEWER SYSTEM. SIDE SLOPES 3:1 OR GREATER WILL BE SOODED OR STABILIZED WITH AN DROSSON CONTROL BLANKET.
- ALL EARTHEN AREAS DISTURBED DURING CONSTRUCTION SHALL HAVE TEMPORARY SEEDING AND MULCHING.
- SLT FENCE AROUND STRUCTURES IN PAVEMENT AREA ARE TO BE INSTALLED PRIOR TO PAVING CONSTRUCTION.
- GRANULAR BACKFILL REQUIRED FOR ALL PIPE UNDER PAVEMENT AND WITHIN 5 FEET OF PAVEMENT.
- THE CONTRACTOR SHALL BE RESPONSIBLE TO PROVIDE AT HIS EXPENSE ALL AUTOMOBILE AND PEDESTRIAN TRAFFIC CONTROL DEVICES REQUIRED BY FEDERAL, STATE, COUNTY, CITY OR LOCAL AGENCY. THE AMOUNT, LOCATION AND SIZE SHALL BE PER DIRECTION OF AGENCY.
- CONTRACTOR TO CONNECT ANY FIELD TILE FOUND DURING CONSTRUCTION TO STORM SEWER NETWORK.

PROJECT NO.: 81172	REVISION
	DATE
DATE: 08/03/20	DES. DR.
INDIANAPOLIS, IN 46204	CAD.
333 North Alabama Street	
Suite 200	
INDIANAPOLIS, IN 46204	
317.299.7600	
FAX: 317.291.5805	
WOOLBERT	
UTILITY PLAN	
EAST C.R. 400W AND RONALD REAGAN PKWY.	
BROWNINGSBURG, INDIANA	
SHEET NO.	
C400	

MATCHLINE - FOR CONTINUATION SEE SHEET C400



KEY NOTES

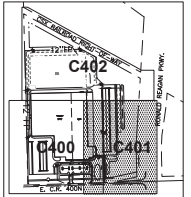
- (A) GAS METER
- (B) GAS SERVICE, COORDINATE WITH VECTREN
- (C) 2" DOMESTIC WATER
- (D) 6" FIRE PROTECTION LINE
- (E) 8" FIRE PROTECTION LINE
- (F) 1.5" WATER METER PIT PER CITIZENS ENERGY GROUP
- (G) POST INDICATOR VALVE (PIV)
- (H) FIRE HYDRANT WITH GATE VALVE
- (I) FIRE DEPARTMENT CONNECTION
- (J) ELECTRIC METER
- (K) TRANSFORMER WITH PAD, COORDINATE WITH HENDRICKS COUNTY REMC
- (L) COORDINATE PRIMARY ELECTRIC SERVICE WITH HENDRICKS COUNTY REMC
- (M) TELEPHONE, COORDINATE WITH UTILITY PROVIDER
- (N) CABLE UTILITY, COORDINATE WITH UTILITY PROVIDER
- (O) 12" FIRE PROTECTION LINE
- (P) 8" SD FIELD TILE; CONTRACTOR TO CONNECT ANY FIELD TILE LOCATED DURING CONSTRUCTION TO NEARBY STORM SEWER NETWORK

LEGEND

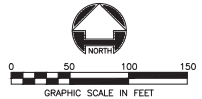
EXISTING	PROPOSED
—	STORM CURB INLET
—	STORM INLET
—	CONCRETE END SECTION
—	STORM MANHOLE
—	SANITARY MANHOLE
—	SANITARY CLEANOUT
—	STORM STRUCTURE NUMBER
—	SANITARY STRUCTURE NUMBER
—	STORM SEWER
—	SANITARY SEWER
—	WATER LINE
—	FIRE HYDRANT
—	POST INDICATOR VALVE
—	WATER METER PIT
—	WATER VALVE
—	GAS
—	GAS METER
—	ELECTRIC METER
—	TRANSFORMER
—	OVERHEAD ELECTRIC/CABLE
—	OVERHEAD ELECTRIC/TELEPHONE/CABLE
—	UNDERGROUND ELECTRIC
—	UNDERGROUND TELEPHONE
—	TELEPHONE PEDESTAL
—	TELEPHONE UTILITY MARKER/PAINT/FLAG
—	FIBEROPTIC
—	FIBEROPTIC UTILITY MARKER/PAINT/FLAG
—	TELEVISION RISER
—	TRAFFIC SIGNAL
—	POWER/CABLE POLE
—	TELEPHONE/POWER/CABLE POLE
—	GUY WIRE
—	SIGN
—	MAILBOX
—	DITCH
—	CREEK
—	FENCE
—	TREE LINE

UTILITY NOTES

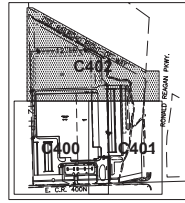
- ROOF DRAINS, FOUNDATION DRAINS, AND OTHER CLEAN WATER CONNECTIONS TO THE SANITARY SEWER SYSTEM ARE PROHIBITED.
- SANITARY MANHOLES SHALL BE PRECAST CONCRETE OR MONOLITHIC, CONSTRUCTED OF CLASS "A" 4,000 PSI CONCRETE, AND CONFORMING TO ASTM C-478.
- JOINTS BETWEEN PRECAST SANITARY MANHOLE SECTIONS SHALL CONFORM TO ASTM C-445.
- SANITARY SEWER PIPE AND FITTINGS MAY BE EITHER PVC THAT CONFORMS TO ASTM D-3034, SDR 35 WITH A MINIMUM CELL CLASSIFICATION OF 12454-B, OR REINFORCED CONCRETE PIPE CLASS III, IV, OR V IN ACCORDANCE WITH ASTM C-754, OR EXISTING IRON PIPE CONFORMING TO ANSI SPECIFICATIONS A21.51 AND ANNA C-151, OR HIGH DENSITY POLYETHYLENE PIPE CONFORMING TO ASTM-3502 CELL CLASS P.E. 3344 30C.
- CONSTRUCTION SHALL NOT COMMENCE UNTIL AN IMPROVEMENT LOCATION PERMIT HAS BEEN OBTAINED.
- WATER MAINS CROSSING ANY AND ALL SEWERS SHALL HAVE A MINIMUM VERTICAL SEPARATION OF 18" BETWEEN THE OUTSIDE OF THE WATER MAIN PIPE AND THE SEWER PIPE. ONE FULL LENGTH OF WATER MAIN PIPE SHALL BE CENTERED AT THE POINT OF THE CROSSING SUCH THAT BOTH JOINTS WILL BE EQUIDISTANT AND AS FAR AWAY FROM THE SEWER AS POSSIBLE. IF WATER LINE(S) CROSS BELOW SANITARY SEWER LINE(S), SEWER LINE MUST BE CONSTRUCTED OF EITHER DUCTILE IRON PIPING OR OF 200# RCP (SDR-21 OR EQUIVALENT) FOR THAT PARTICULAR SPAN.
- EXISTING UNDERGROUND UTILITIES ARE SHOWN IN THEIR APPROXIMATE LOCATIONS ACCORDING TO THE BEST AVAILABLE INFORMATION. THE CONTRACTOR SHALL BE RESPONSIBLE FOR DETERMINING THE EXACT LOCATION OF THE EXISTING UTILITIES AND REPAIRING ANY DAMAGE DONE TO THE UTILITIES DURING PROBING OR CONSTRUCTION. TO OBTAIN ACCURATE FIELD LOCATIONS OF EXISTING UNDERGROUND UTILITIES, THE CONTRACTOR SHALL NOTIFY THE FOLLOWING FORTY-EIGHT (48) HOURS IN ADVANCE: INDIANA UNDERGROUND CABLE LOCATION 1-800-382-5544.
- ALL STORM DRAINAGE CONSTRUCTION SHALL BE PERFORMED IN ACCORDANCE WITH LOCAL STORM SEWER SPECIFICATIONS AND REQUIREMENTS.
- FIELD TILE ENCOUNTERED SHALL BE REPLACED AND/OR CONNECTED TO THE STORM SEWER SYSTEM.
- SIDE SLOPES 3:1 OR GREATER WILL BE SODDED OR STABILIZED WITH AN EROSION CONTROL BLANKET.
- ALL EARTHEN AREAS DISTURBED DURING CONSTRUCTION SHALL HAVE TEMPORARY SEEDING AND MULCHING.
- SEE FENCE AROUND STRUCTURES IN PAVEMENT AREA ARE TO BE INSTALLED PRIOR TO PAVING CONSTRUCTION.
- GRANULAR BACKFILL REQUIRED FOR ALL PIPE UNDER PAVEMENT AND WITHIN 5 FEET OF PAVEMENT.
- THE CONTRACTOR SHALL BE RESPONSIBLE TO PROVIDE AT HIS EXPENSE ALL AUTOMOBILE AND PEDESTRIAN TRAFFIC CONTROL DEVICES REQUIRED BY FEDERAL, STATE, COUNTY, CITY OR LOCAL AGENCY. THE AMOUNT, LOCATION AND SIZE SHALL BE PER DIRECTION OF AGENCY.
- CONTRACTOR TO CONNECT ANY FIELD TILE LOCATED DURING CONSTRUCTION TO STORM SEWER NETWORK.



KEYMAP
NO SCALE



PROJECT NO.: 81172	REVISION
	DATE
DATE 08/03/20	INDIANAPOLIS, IN 46204
DES. DR.	INDIANAPOLIS, IN 46204
CHECKED	INDIANAPOLIS, IN 46204
 333 North Alabama Street Suite 200 Indianapolis, IN 46204 317.299.7800 317.291.5805	
PROJECT AISLE	UTILITY PLAN
EAST CR. 400M AND RONALD REAGAN PKWY. BROWNSBURG, INDIANA	
SHEET NO.	C401



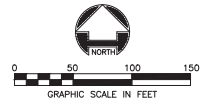
KEYMAP
NO SCALE

LEGEND

EXISTING	PROPOSED	EXISTING	PROPOSED	EXISTING	PROPOSED
STORM CURB INLET	—	GAS METER	G	PULL BOX	—
STORM INLET	—	GAS METER	⊙	TELEVISION RISER	—
CONCRETE END SECTION	—	ELECTRIC METER	⊙	TRAFFIC SIGNAL	—
STORM MANHOLE	—	TRANSFORMER	⊙	POWER/CABLE POLE	—
SANITARY MANHOLE	—	OVERHEAD ELECTRIC/CABLE	—	TELEPHONE/POWER/CABLE POLE	—
SANITARY CLEANOUT	—	OVERHEAD ELECTRIC/TELEPHONE CABLE	—	GUY WIRE	—
STORM STRUCTURE NUMBER	1	UNDERGROUND ELECTRIC	UE	SIGN	—
SANITARY STRUCTURE NUMBER	100	UNDERGROUND TELEPHONE	UT	MANHOLE	—
STORM SEWER	—	TELEPHONE PEDESTAL	—	DITCH	—
SANITARY SEWER	—	TELEPHONE UTILITY MARKER/PANT/FLAG	—	CREEK	—
WATER LINE	—	FIBEROPTIC UTILITY MARKER/PANT/FLAG	—	FENCE	—
FIRE HYDRANT	—	FIBEROPTIC	—	TREE LINE	—
POST INDICATOR VALVE	—				
WATER METER PIT	—				
WATER VALVE	—				

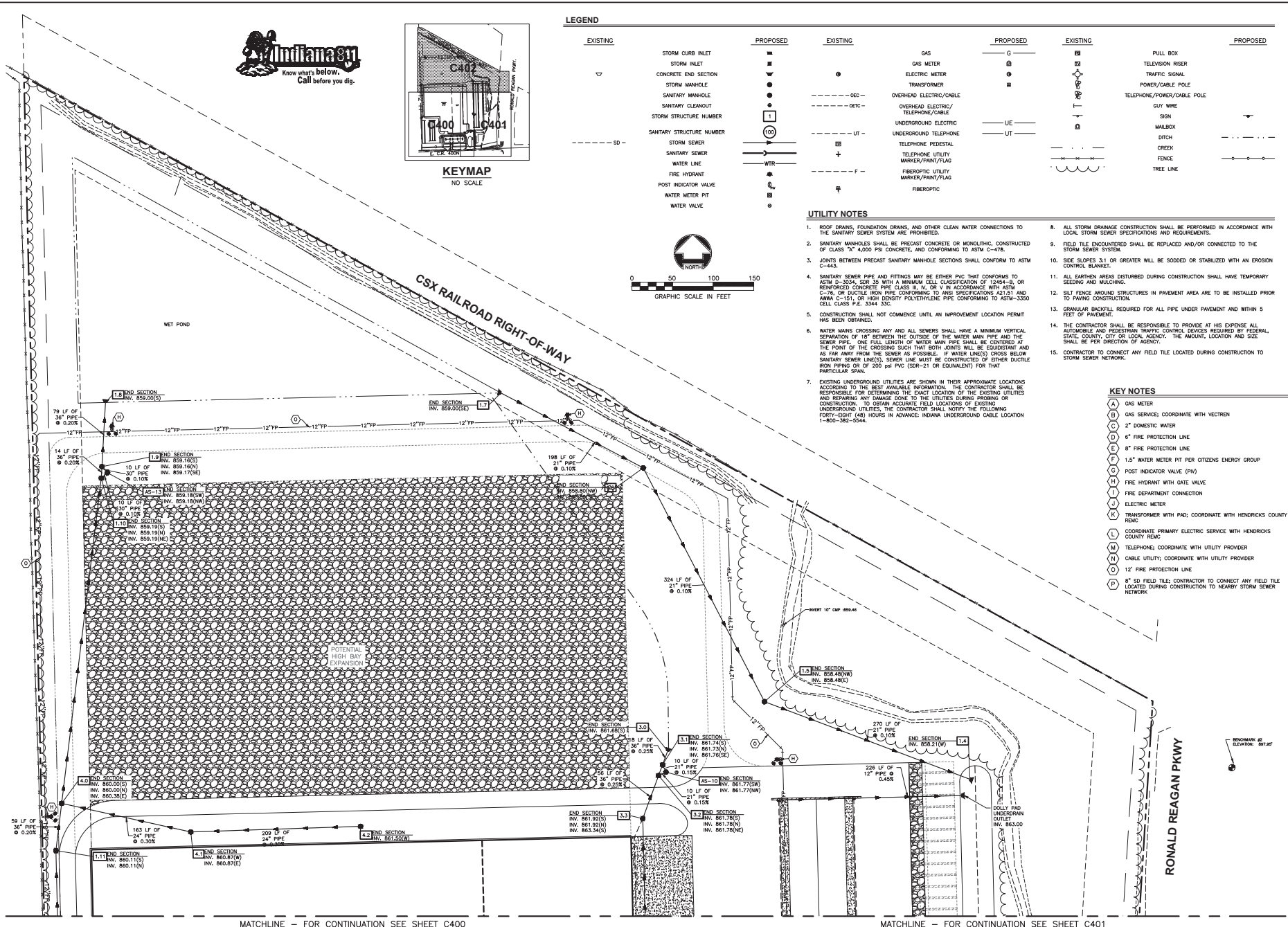
UTILITY NOTES

- ROOF DRAINS, FOUNDATION DRAINS, AND OTHER CLEAN WATER CONNECTIONS TO THE SANITARY SEWER SYSTEM ARE PROHIBITED.
- SANITARY MANHOLES SHALL BE PRECAST CONCRETE OR MONOLITHIC, CONSTRUCTED OF CLASS "A" 4,000 PSI CONCRETE, AND CONFORMING TO ASTM C-478.
- JOINTS BETWEEN PRECAST SANITARY MANHOLE SECTIONS SHALL CONFORM TO ASTM C-443.
- SANITARY SEWER PIPE AND FITTINGS MAY BE EITHER PVC THAT CONFORMS TO ASTM D-3034, SDR 35 WITH A MINIMUM CELL CLASSIFICATION OF 12454-B, OR REINFORCED CONCRETE PIPE, CLASS III, IV, OR V, IN ACCORDANCE WITH ASTM C-76, OR DUCTILE IRON PIPE CONFORMING TO AASHTO M294 AND AWWA C-151, OR HIGH DENSITY POLYETHYLENE PIPE CONFORMING TO ASTM-3350 CELL CLASS P-2, 334-336.
- CONSTRUCTION SHALL NOT COMMENCE UNTIL AN IMPROVEMENT LOCATION PERMIT HAS BEEN OBTAINED.
- WATER MAINS CROSSING ANY AND ALL SEWERS SHALL HAVE A MINIMUM VERTICAL SEPARATION OF 18" BETWEEN THE OUTSIDE OF THE WATER MAIN PIPE AND THE SEWER PIPE. ONE FULL LENGTH OF WATER MAIN PIPE SHALL BE CENTERED AT THE POINT OF THE CROSSING SUCH THAT BOTH JOINTS WILL BE QUADRANT AND AS FAR AWAY FROM THE SEWER AS POSSIBLE. IF WATER LINE(S) CROSS BELOW SANITARY SEWER LINE(S), SEWER LINE MUST BE CONSTRUCTED OF EITHER DUCTILE IRON PIPING OR OF 200 PSI PVC (SDR-21 OR EQUIVALENT) FOR THAT PARTICULAR SPAN.
- EXISTING UNDERGROUND UTILITIES ARE SHOWN IN THEIR APPROXIMATE LOCATIONS ACCORDING TO THE BEST AVAILABLE INFORMATION. THE CONTRACTOR SHALL BE RESPONSIBLE FOR DETERMINING THE EXACT LOCATION OF THE EXISTING UTILITIES AND REPAIRING ANY DAMAGE DONE TO THE UTILITIES DURING PROBING OR CONSTRUCTION. TO OBTAIN ACCURATE FIELD LOCATIONS OF EXISTING UNDERGROUND UTILITIES, THE CONTRACTOR SHALL NOTIFY THE FOLLOWING FORTY-FOUR (43) HOURS IN ADVANCE: INDIANA UNDERGROUND CABLE LOCATION 1-800-382-5544.
- ALL STORM DRAINAGE CONSTRUCTION SHALL BE PERFORMED IN ACCORDANCE WITH LOCAL STORM SEWER SPECIFICATIONS AND REQUIREMENTS.
- FIELD TILE ENCOUNTERED SHALL BE REPLACED AND/OR CONNECTED TO THE STORM SEWER SYSTEM.
- SIDE SLOPES 3:1 OR GREATER WILL BE SOODED OR STABILIZED WITH AN EROSION CONTROL BLANKET.
- ALL EARTHEN AREAS DISTURBED DURING CONSTRUCTION SHALL HAVE TEMPORARY SEEDING AND MULCHING.
- SILT FENCE AROUND STRUCTURES IN PAVEMENT AREA ARE TO BE INSTALLED PRIOR TO PAVING CONSTRUCTION.
- GRANULAR BACKFILL REQUIRED FOR ALL PIPE UNDER PAVEMENT AND WITHIN 5 FEET OF PAVEMENT.
- THE CONTRACTOR SHALL BE RESPONSIBLE TO PROVIDE AT HIS EXPENSE ALL AUTOMOBILE AND PEDESTRIAN TRAFFIC CONTROL DEVICES REQUIRED BY FEDERAL, STATE, COUNTY, CITY OR LOCAL AGENCY. THE AMOUNT, LOCATION AND SIZE SHALL BE PER DIRECTION OF AGENCY.
- CONTRACTOR TO CONNECT ANY FIELD TILE LOCATED DURING CONSTRUCTION TO STORM SEWER NETWORK.



KEY NOTES

- (A) GAS METER
- (B) GAS SERVICE; COORDINATE WITH VECTREN
- (C) 2" DOMESTIC WATER
- (D) 6" FIRE PROTECTION LINE
- (E) 8" FIRE PROTECTION LINE
- (F) 1.5" WATER METER PIT PER CITIZENS ENERGY GROUP
- (G) POST INDICATOR VALVE (PIV)
- (H) FIRE HYDRANT WITH GATE VALVE
- (I) FIRE DEPARTMENT CONNECTION
- (J) ELECTRIC METER
- (K) TRANSFORMER WITH PAD; COORDINATE WITH HENDRICKS COUNTY REMC
- (L) COORDINATE PRIMARY ELECTRIC SERVICE WITH HENDRICKS COUNTY REMC
- (M) TELEPHONE; COORDINATE WITH UTILITY PROVIDER
- (N) CABLE UTILITY; COORDINATE WITH UTILITY PROVIDER
- (O) 12" FIRE PROTECTION LINE
- (P) 8" SO FIELD TILE; CONTRACTOR TO CONNECT ANY FIELD TILE LOCATED DURING CONSTRUCTION TO NEARBY STORM SEWER NETWORK.



MATCHLINE - FOR CONTINUATION SEE SHEET C400

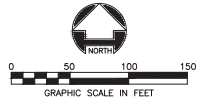
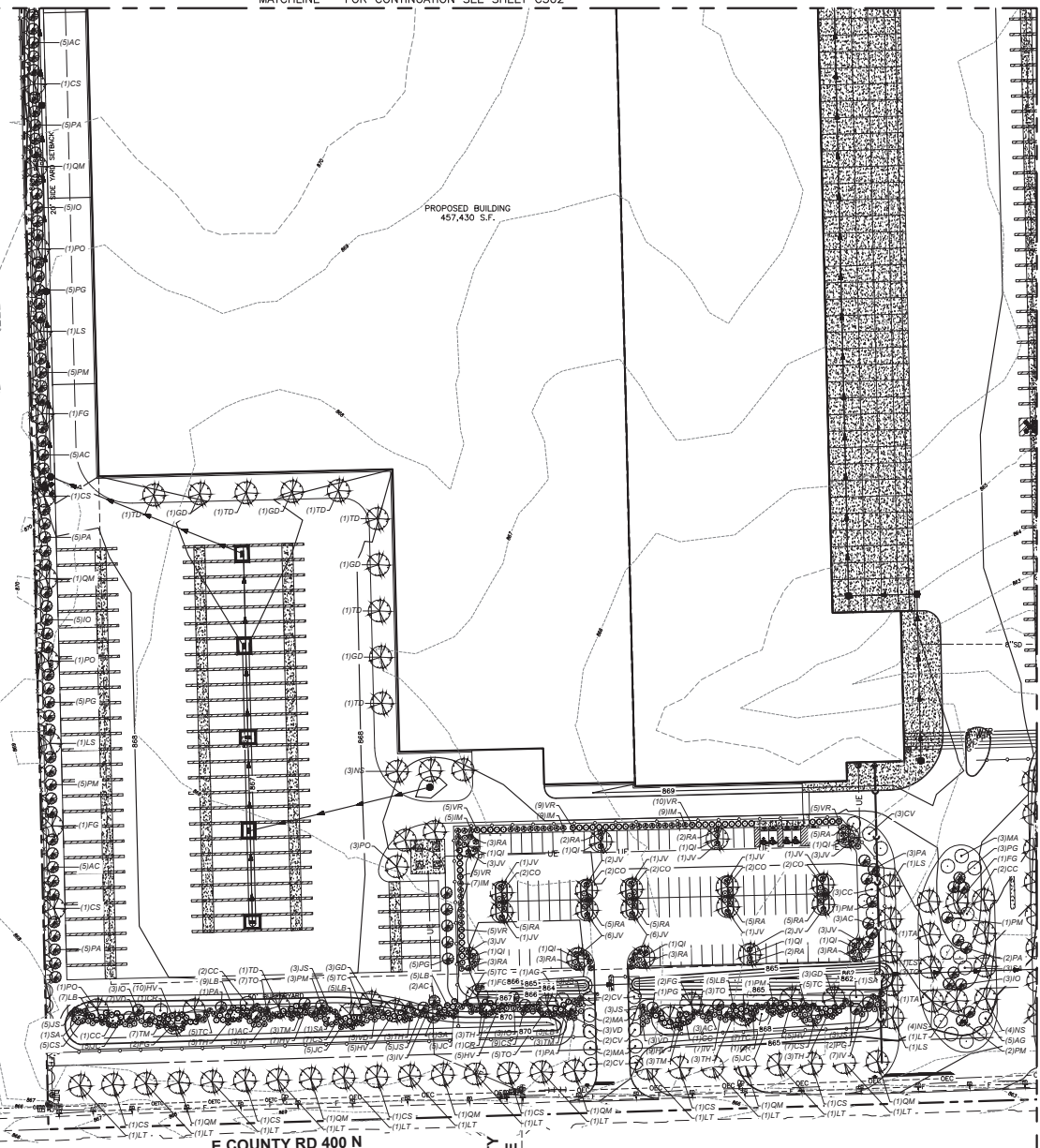
MATCHLINE - FOR CONTINUATION SEE SHEET C401

Layout: Job Name: C402, Images: Xrefs: 81172-x.dwg; 81172-p.dwg; 81172-BLK.dwg
 Last Saved By: Brock, 8/7/2020 7:53:19 PM
 C:\Users\jvisher\OneDrive\Documents\81172_Brownburg\Project Aisle Facility\A0_Disciplines\Civil\Coord\8117201.dwg Plotted: By: Brock, 8/12/2020 8:01:22 PM

REVISION	No.	DATE	PROJECT No:	81172
			DATE	08/03/20
DES.			DR.	
			DR.	
			CKD.	
PROJECT AISE		333 North Alabama Street Suite 200 Indianapolis, IN 46204 317.299.7600 317.291.5605		
UTILITY PLAN				
SHEET NO. C402		EAST CR. 40W AND RONALD REAGAN PKWY. BROWNSBURG, INDIANA		

Layout Tab Name: C500_Images; Xrefs: 81172-x.dwg, 81172-p.dwg, 81172-TBL.dwg
 Unit: Served By: Broomfield, 8/2/2020 1:43:14 PM
 C:\Users\jvander Construction Group\08172\Broomfield\Project Aisle Facility\X-0_Disciplines\Civil\Cadd\CO\81172-04.dwg Plotted By: jvander, Broome, 8/2/2020 1:43:14 PM

MATCHLINE - FOR CONTINUATION SEE SHEET C502



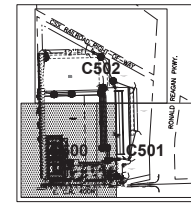
LANDSCAPE NOTES:

1. LOCATING AND PROTECTING ALL UNDERGROUND UTILITIES, PRIOR TO DIGGING, IS RESPONSIBILITY OF THE LANDSCAPE CONTRACTOR.
2. PRIOR TO INSTALLATION, THE LANDSCAPE CONTRACTOR SHALL INSPECT THE SURF GRADE, GENERAL SITE CONDITIONS, VERIFY ELEVATIONS, UTILITY LOCATIONS, IRRIGATION, APPROVE TOPSOIL PROVIDED BY GENERAL CONTRACTOR AND OBSERVE THE SITE CONDITIONS UNDER WHICH THE WORK IS TO BE DONE. NOTIFY GENERAL CONTRACTOR OF ANY UNSATISFACTORY CONDITIONS. WORK SHALL NOT PROCEED UNTIL SUCH CONDITIONS HAVE BEEN CORRECTED AND ACCEPTABLE TO THE LANDSCAPE CONTRACTOR AND/OR CONSTRUCTION MANAGER.
3. GENERAL AND LANDSCAPE CONTRACTOR ARE RESPONSIBLE FOR PROTECTING EXISTING TREES FROM DAMAGE DURING CONSTRUCTION. GENERAL CONTRACTOR TO INSTALL TREE PROTECTION FENCING PRIOR TO ANY SITE WORK.
4. ALL SHRUB AND GRASS/COVER BEDS TO BE MULCHED WITH A MINIMUM OF 3 INCHES OF CLEAN SHREDED HARDWOOD MULCH.
5. PLANTING HOLES TO BE DUG A MINIMUM OF TWICE THE WIDTH OF THE SIZE OF THE ROOT BALL OF BOTH SHRUB AND TREE. AMEND BACKFILL WITH TOPSOIL MIX, BACKFILL AND TAMP BOTTOM OF HOLE PRIOR TO PLANTING SO TOP OF ROOT BALL DOES NOT SETTLE BELOW SUBSURFACE GRADE.
6. TOPSOIL MIX TO BE 4 PARTS SCREENED TOPSOIL AND 1 PART ORGANIC MATERIAL (E.G. NATURE'S HELPERS OR FRO MIX).
7. EXISTING GRASS IN PROPOSED PLANTING AREAS TO BE REMOVED AND AREA TO BE HAND RAKED TO REMOVE ALL ROOTS AND DEBRIS LARGER THAN 1 INCH IN DIAMETER PRIOR TO PLANTING SHRUBS.
8. SOIL TO BE TESTED TO DETERMINE FERTILIZER AND LIME REQUIREMENTS. LIME AND FERTILIZER TO BE DISTRIBUTED PRIOR TO SPREADING SEEDS. ALL DISTURBED AREAS (INCLUDING RIGHT-OF-WAYS) NOT RECEIVING PLANTINGS TO RECEIVE 4 INCHES OF TOPSOIL AND SEEDS.
9. ALL CHANGES TO DESIGN AND/OR PLANT SUBSTITUTIONS TO BE AUTHORIZED BY LANDSCAPE ARCHITECT.
10. ALL PARKING ISLANDS TO BE BERMED UP 6"-10" WITH CLEAN FRAGILE TOPSOIL PRIOR TO PLANTING.
11. ALL LANDSCAPING SHALL BE INSTALLED IN CONFORMANCE WITH ANSI Z66.1 THE AMERICAN STANDARD FOR NURSERY STOCK AND THE ACCEPTED STANDARDS OF AMERICANHORT.
12. SITE TO BE IRRIGATED BY AN AUTOMATIC UNDERGROUND IRRIGATION SYSTEM.
13. THE LANDSCAPE CONTRACTOR SHALL GUARANTEE ALL PLANTS INSTALLED FOR ONE FULL YEAR FROM DATE OF ACCEPTANCE BY THE OWNER. ALL PLANTS SHALL BE LIVE AND AT A VIGOROUS RATE OF GROWTH AT THE END OF THE GUARANTEE PERIOD. THE LANDSCAPE CONTRACTOR SHALL NOT BE RESPONSIBLE FOR ACTS OF GOD OR WINDSTORM.
14. ANY PLANT THAT IS DETERMINED DEAD, IN AN UNHEALTHY OR UNSOUND CONDITION, LEAFY OR SHRIMPY OR DEAD BRANCHES OR OTHER SYMPTOMS OF POOR, NON-VIGOROUS GROWTH SHALL BE REPLACED BY THE LANDSCAPE CONTRACTOR WITH THE COST OF THE REPLACEMENT INCLUDED IN THE BID OR PROPOSAL PRICE.
15. STAKE ALL TREES.
16. WATER THOROUGHLY TWICE IN THE FIRST 24 HOURS AND APPLY MULCH IMMEDIATELY.

LANDSCAPE CODE SUMMARY:

- TOWN OF BROOMFIELD
 UNIFIED DEVELOPMENT ORDINANCE
 5.38 LANDSCAPING STANDARDS
- ON-SITE STANDARDS (5.38.F.1)**
 1-2 SITES SHALL PROVIDE THE FOLLOWING REQUIREMENTS:
 3 SHADE TREES (ST), 3 EVERGREEN TREES (ET), 2 ORNAMENTAL TREES (OT), AND 12 LARGE SHRUBS (LS) FOR EVERY 5,000 SF OF GROSS BUILDING AREA.
 BUILDING = 457,348 SF
 = 274.4 ST, 274.4 ET, 183.0 OT, & 1,097.6 SH REQUIRED
 = 108 ST, 81 ET, 49 OT, 498 SH, & EXISTING VEGETATION PROVIDED
- STREET FRONTAGE STANDARDS (5.38.F.2)**
 1-2 SITES SHALL PROVIDE LEVEL 3 LANDSCAPING ALONG FRONTAGE:
 4.0 PLANT UNITS (PU) FOR EACH 100 LF OF FRONTAGE
 E COUNTY ROAD 400 N (1,196.2 LF)
 = 47.8 PU REQUIRED
 = 115.2 PU PROVIDED IN COMBINATION WITH BUFFERVAID REQUIREMENT (51 ST, 29 ET, 31 OT, 67 TALL EVERGREEN SHRUBS, 53 EVERGREEN SHRUBS, 150 DECIDUOUS SHRUBS, & EXISTING VEGETATION TO REMAIN)
- PARKING LOT LANDSCAPING STANDARDS (5.39)**
 NOT REQUIRED IN 1-2 SITES
- BUFFER VAID PLANTING STANDARDS (5.40)**
 1-2 SITES ADJACENT TO 40 & 52 SITES SHALL PROVIDE LEVEL 3 LANDSCAPING ALONG PROPERTY LINE. 4.0 PLANT UNITS (PU) FOR EACH 100 LF OF FRONTAGE
 NORTH 12-CC (1,587.7 LF)
 = 63.5 PU REQUIRED
 = MET BY EXISTING VEGETATION TO REMAIN
 WEST 12-AG (1,995.9 LF)
 = 79.8 PU REQUIRED
 = 89.25 PU PROVIDED (19 ST AND 100 ET)
 EAST 12-CC (1,199.4 LF)
 = 47.9 PU REQUIRED
 = MET BY EXISTING VEGETATION TO REMAIN
 SOUTH 12-AG (1,196.2 LF)
 = 47.8 PU REQUIRED
 = 115.2 PU PROVIDED IN COMBINATION WITH BUFFERVAID REQUIREMENT (51 ST, 29 ET, 31 OT, 67 TALL EVERGREEN SHRUBS, 53 EVERGREEN SHRUBS, 150 DECIDUOUS SHRUBS, & EXISTING VEGETATION TO REMAIN)

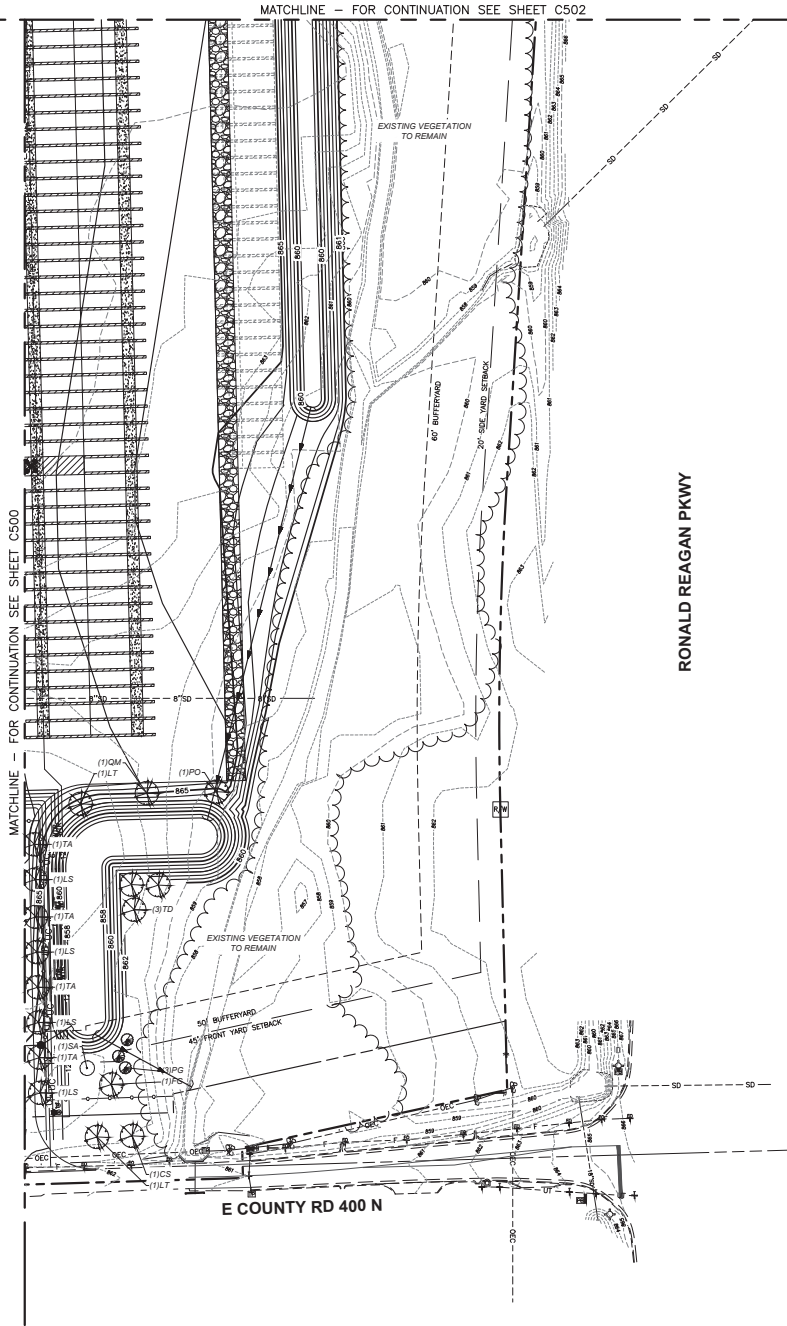
MATCHLINE - FOR CONTINUATION SEE SHEET C501



KEYMAP
 NO SCALE



PROJECT NO: 81172	DATE 05/03/20	DES. DR.	CKD.	REVISION
				No.
PROJECT NO: 81172				DATE: 05/03/20
333 North Alabama Street Suite 200 Indianapolis, IN 46204				DES. DR.
WOODBERT				DR.
INDIANAPOLIS, INDIANA				CKD.
333 North Alabama Street Suite 200 Indianapolis, IN 46204 WOODBERT INDIANAPOLIS, INDIANA 317.299.7600 FAX: 317.291.5605				
PROJECT AISLE				LANDSCAPE PLAN
EAST CR. 400W AND RONALD REAGAN PKWY. BROOMFIELD, INDIANA				
SHEET NO.				C500

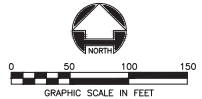


MATCHLINE - FOR CONTINUATION SEE SHEET C502

MATCHLINE - FOR CONTINUATION SEE SHEET C500

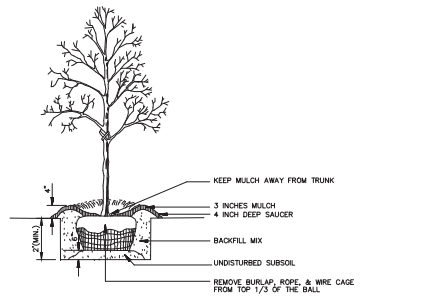
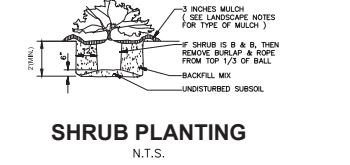
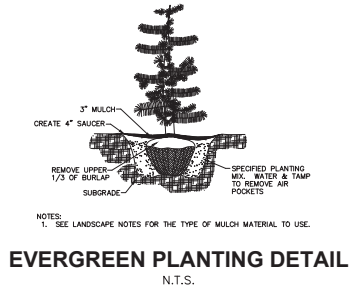
RONALD REAGAN PKWY

E COUNTY RD 400 N

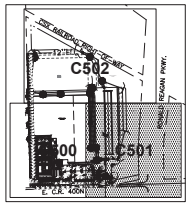


LANDSCAPE NOTES:

1. LOCATING AND PROTECTING ALL UNDERGROUND UTILITIES, PRIOR TO DIGGING, IS RESPONSIBILITY OF THE LANDSCAPE CONTRACTOR.
2. PRIOR TO INSTALLATION, THE LANDSCAPE CONTRACTOR SHALL INSPECT THE SUB GRADE, GENERAL SITE CONDITIONS, VERIFY ELEVATIONS, UTILITY LOCATIONS, IRRIGATION, APPROVE TOPSOIL PROVIDED BY GENERAL CONTRACTOR AND OBSERVE THE SITE CONDITIONS UNDER WHICH THE WORK IS TO BE DONE. NOTIFY GENERAL CONTRACTOR OF ANY UNSATISFACTORY CONDITIONS. WORK SHALL NOT PROCEED UNTIL SUCH CONDITIONS HAVE BEEN CORRECTED AND ARE ACCEPTABLE TO THE LANDSCAPE CONTRACTOR AND/OR CONSTRUCTION MANAGER.
3. GENERAL AND LANDSCAPE CONTRACTOR ARE RESPONSIBLE FOR PROTECTING EXISTING TREES FROM DAMAGE DURING CONSTRUCTION. GENERAL CONTRACTOR TO INSTALL TREE PROTECTION FENCING PRIOR TO ANY SITE WORK.
4. ALL SHRUB AND GROUNDCOVER BEDS TO BE MULCHED WITH A MINIMUM OF 3 INCHES OF CLEAN SHREDED HARDWOOD MULCH.
5. PLANTING HOLES TO BE DUG A MINIMUM OF TWICE THE WIDTH THE SIZE OF THE ROOT BALL OF BOTH SHRUB AND TREE. AMEND BACKFILL WITH TOPSOIL MIX. BACKFILL AND TAMP BOTTOM OF HOLE PRIOR TO PLANTING. SO TOP OF ROOT BALL DOES NOT SETTLE BELOW SURROUNDING GRADE.
6. TOPSOIL MIX TO BE 4 PARTS SCREENED TOPSOIL AND 1 PART ORGANIC MATERIAL (E.G. NATURE'S HELPERS OR PRO MIX).
7. EXISTING GRASS IN PROPOSED PLANTING AREAS TO BE REMOVED AND AREA TO BE HAND RAKED TO REMOVE ALL ROCKS AND DEBRIS LARGER THAN 1 INCH IN DIAMETER PRIOR TO PLANTING SHRUBS.
8. REQUIREMENTS: LIME AND FERTILIZER TO BE DISTRIBUTED PRIOR TO SPREADING SEED. ALL DISTURBED AREAS (INCLUDING ROOF-OF-WAYS) NOT RECEIVING PLANTINGS TO RECEIVE 4 INCHES OF TOPSOIL AND SEEDS.
9. ALL CHANGES TO DESIGN AND/OR PLANT SUBSTITUTIONS TO BE AUTHORIZED BY LANDSCAPE ARCHITECT.
10. ALL PARKING ISLANDS TO BE BERMED UP 6"-10" WITH CLEAN FRIABLE TOPSOIL PRIOR TO PLANTING.
11. ALL LANDSCAPING SHALL BE INSTALLED IN CONFORMANCE WITH ANSI Z601 - THE AMERICAN STANDARD FOR NURSERY STOCK AND THE ACCEPTED STANDARDS OF AMERICAN-APRT.
12. SITE TO BE 100% IRRIGATED BY AN AUTOMATIC UNDERGROUND IRRIGATION SYSTEM.
13. THE LANDSCAPE CONTRACTOR SHALL GUARANTEE ALL PLANTS INSTALLED FOR ONE FULL YEAR FROM DATE OF ACCEPTANCE BY THE OWNER. ALL PLANTS SHALL BE ALIVE AND AT A VIGOROUS RATE OF GROWTH AT THE END OF THE GUARANTEE PERIOD. THE LANDSCAPE CONTRACTOR SHALL NOT BE RESPONSIBLE FOR ACTS OF GOD OR VANDALISM.
14. ANY PLANT THAT IS DETERMINED DEAD, IN AN UNHEALTHY OR UNSUITABLE CONDITION, LOST ITS SHAPE DUE TO DEAD BRANCHES OR OTHER SYMPTOMS OF POOR, NON-VIGOROUS GROWTH SHALL BE REPLACED BY THE LANDSCAPE CONTRACTOR WITH THE COST OF THE REPLACEMENT INCLUDED IN THE BID OR PROPOSAL PRICE.
15. STAKE ALL TREES.
16. WATER THOROUGHLY TWICE IN THE FIRST 24 HOURS AND APPLY MULCH IMMEDIATELY.



NOTE: SEE LANDSCAPE NOTES FOR THE TYPE OF MULCH MATERIAL TO USE.



KEYMAP
NO SCALE



REVISION		No.	DATE

PROJECT No:	81172
DATE:	05/03/20
DES. DR.	
CKD.	

333 North Alabama Street Suite 200 Indianapolis, IN 46204 317.299.7600 317.291.5605

W WOOLBERT LANDSCAPE ARCHITECTS

PROJECT AISLE
EAST CR. 400W AND RONALD REAGAN PKWY. BROWNSELBURG, INDIANA

LANDSCAPE PLAN

SHEET NO.	C501
-----------	-------------